

Single Cell Coating Systems

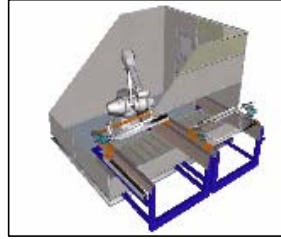
Turn Table



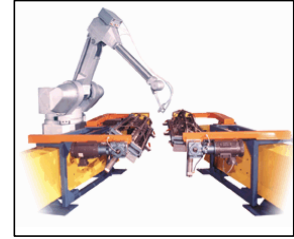
Independent Arm



Small Parts Cell



V-Slider



Customer Specifications

Fixture Size Total, Left Side:

Fixture Size Total, Right Side:

Mask Style, Left Side:

- Flip-Top
- Clamshell
- No-Masking, Part Nest Only.

Mask Style, Right Side:

- Flip-Top
- Clamshell
- No-Masking, Part Nest Only.

Fixture Style, Left Side:

- Servo Driven Rotation. (4 teachable positions).
- No Rollover. Fixed Style.

Fixture Style, Right Side:

- Servo Driven Rotation. (4 teachable positions).
- No Rollover. Fixed Style.

Coating Type:

- 1k (single component)
- 2k (Resin/Catalyst)
- Both 1k and 2k Coatings to be used.

Robot Mfg preference:

- FANUC
- ABB
- Kawasaki
- Nachi
- Motoman

Single Cell Coating Systems

Booth preference:

- Pit Style Dry Filter Media
- Downdraft Water Wash
- Rear Exhaust (Water Wash, waterfall)
- Rear Exhaust Dry Filter Media

Process Programming:

- Supplied by Customer
- To be Supplied

Estimated available floor space: (Width & Length)

V-Slider Standard Equipment & Options.

Fluid Control Section

Fluid, Fan and Atom Analog Gun Controls (Standard) .

PLC based analog outputs control 3 I/P transducers which directly control (open loop) the Fluid, Fan and Atom Air gun settings. The operator is able to set up Fluid, Fan and Atom parameters from the PLC operator interface screen. Up to 12 "brush" patterns may be programmed in the PLC. The robot sends a digital output signal to the PLC to select brush patterns during production. Pneumatic gauge package and AW Fluid metering unit with display are included.

Closed Loop Fluid Controller (Optional) .

A single component *closed loop* fluid controller. Control unit mounts in PLC enclosure, flow meter and opto isolators are installed in fluid lines near robot. The A&W device has the largest market share of any closed loop fluid controller in the paint industry. It is used by many OEM's in their equipment (ITW, Fanuc etc...). Pneumatic gauge package and AW Fluid metering unit with display are included.

Single Cell Coating Systems

Gun Trigger Box Section

- Gun Trigger Box. Wall Mount (Standard)

A valve and header assembly to allow the PLC to perform gun trigger, gun dump, fluid override and atom air enable. This box also houses the fluid, fan and atom regulators (if needed).

- Gun Trigger Box. Robot Mount (Optional)

A valve and header assembly to allow the PLC to perform gun trigger, gun dump, fluid override and atom air enable. This box also houses the fluid, fan and atom regulators (if needed).

Gun Select Section

- ITW Hvlp with mounting bracket including serated locking positions (Standard)

- Other = (Optional)

Single Cell Coating Systems

Fluid Mixing Section. 2k components

Graco PMix Controller (Optional) .

A batch 2 component mixing system. Stand Alone control box, can feed up to four paint guns simultaneously. The PMix will be integrated into the V-Slider control system, so that when a color is selected the PMix unit will be commanded to Halt, Purge, Set Ratio and Mix by the PLC based on the Color selected by the operator. PMix Alarms: Overdose, Pot Life and others will be integrated and displayed on the Operator Pendant for viewing and PMix Reset functions. The Graco PMix unit is capable of handling both 1k and 2k materials automatically.

Graco ProMix Controller (Optional) .

A batch 2 component mixing system. Stand Alone control box, which is pneumatically powered, can feed up to 1 paint gun simultaneously. The ProMix will not be integrated into the V-Slider control system electronics. The operator must use the ProMix control panel to operate the unit. The ProMix is only capable of handling 2k components.

ITW Ransburg Dynaflow Controller (Optional) .

A batch 2 component mixing system. The Dynaflow will be integrated into the V-Slider control system, so that when a color is selected the Dynaflow unit will be commanded to Halt, Purge, Set Ratio and Mix by the PLC based on the Color selected by the operator. Dynaflow Alarms: Overdose, Pot Life and others will be integrated and displayed on the Operator Pendant for viewing and Dynaflow Reset functions. This unit has built-in Closed Loop Fluid control of the mixed material.

Color Valve Assemblies

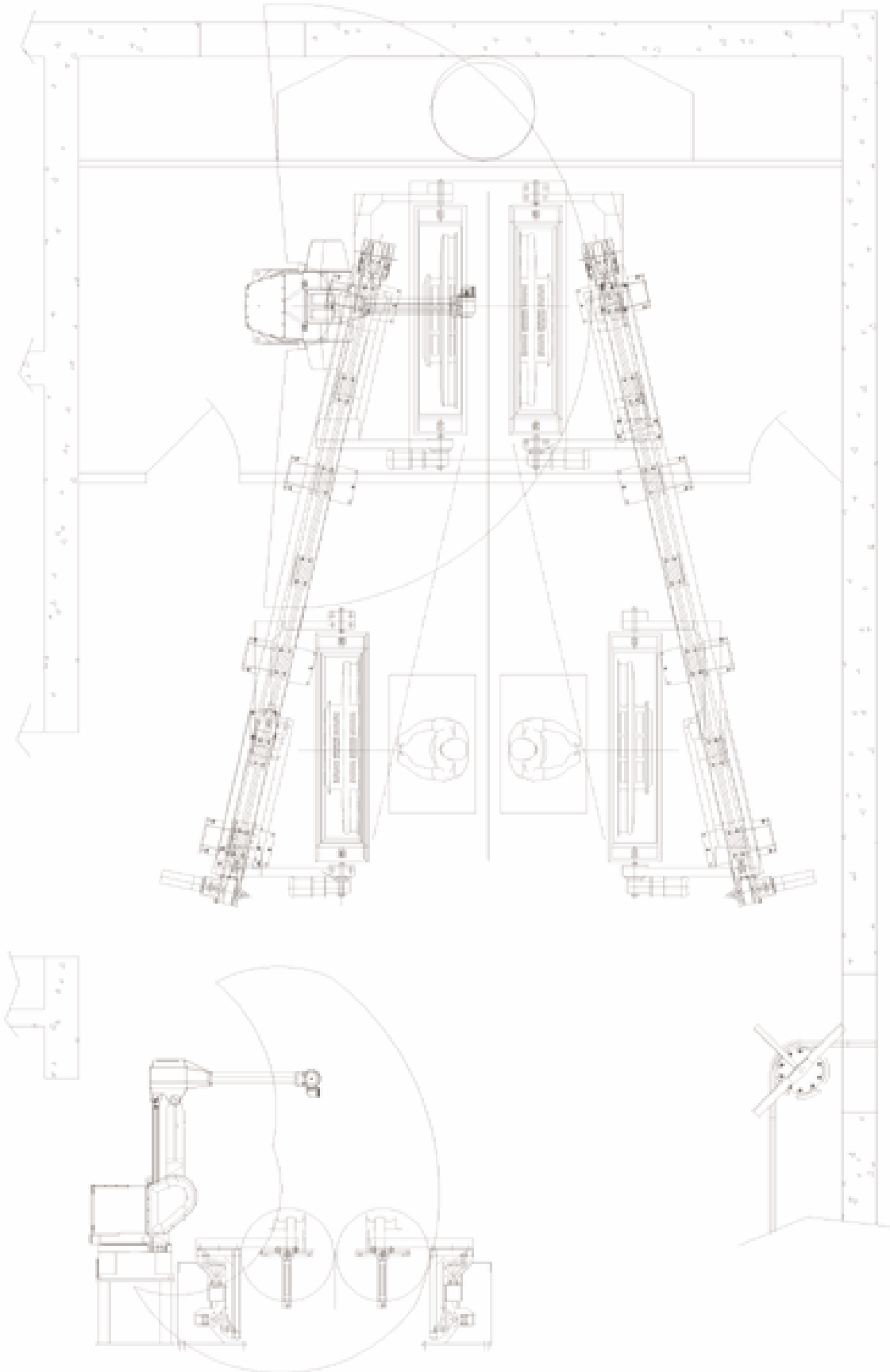
Graco Color Stack Assembly with pre-engineered booth penetration plate. (Optional) .

Number of Colors + Solvent + Air + (Catalyst, if necessary) =

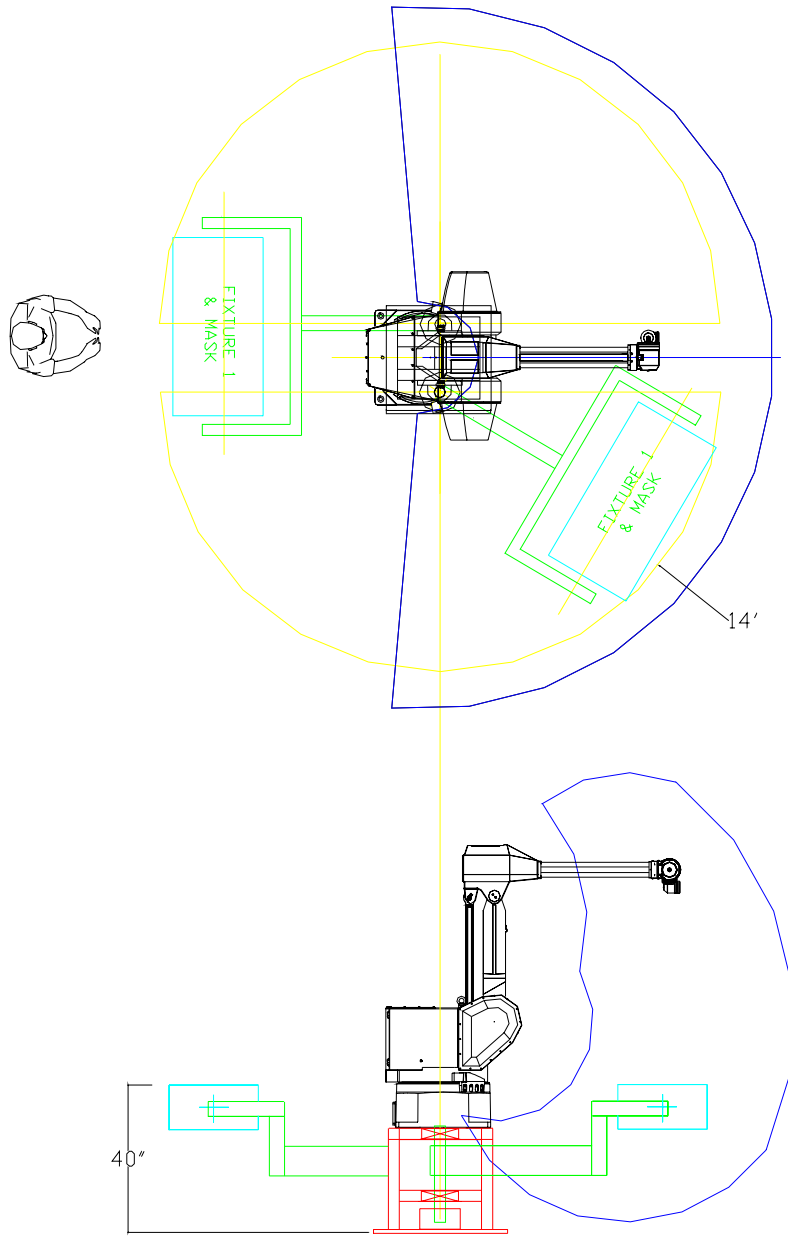
ITW Ransburg Color Stack Assembly with pre-engineered booth penetration plate. (Optional) .

Number of Colors + Solvent + Air + (Catalyst, if necessary) =

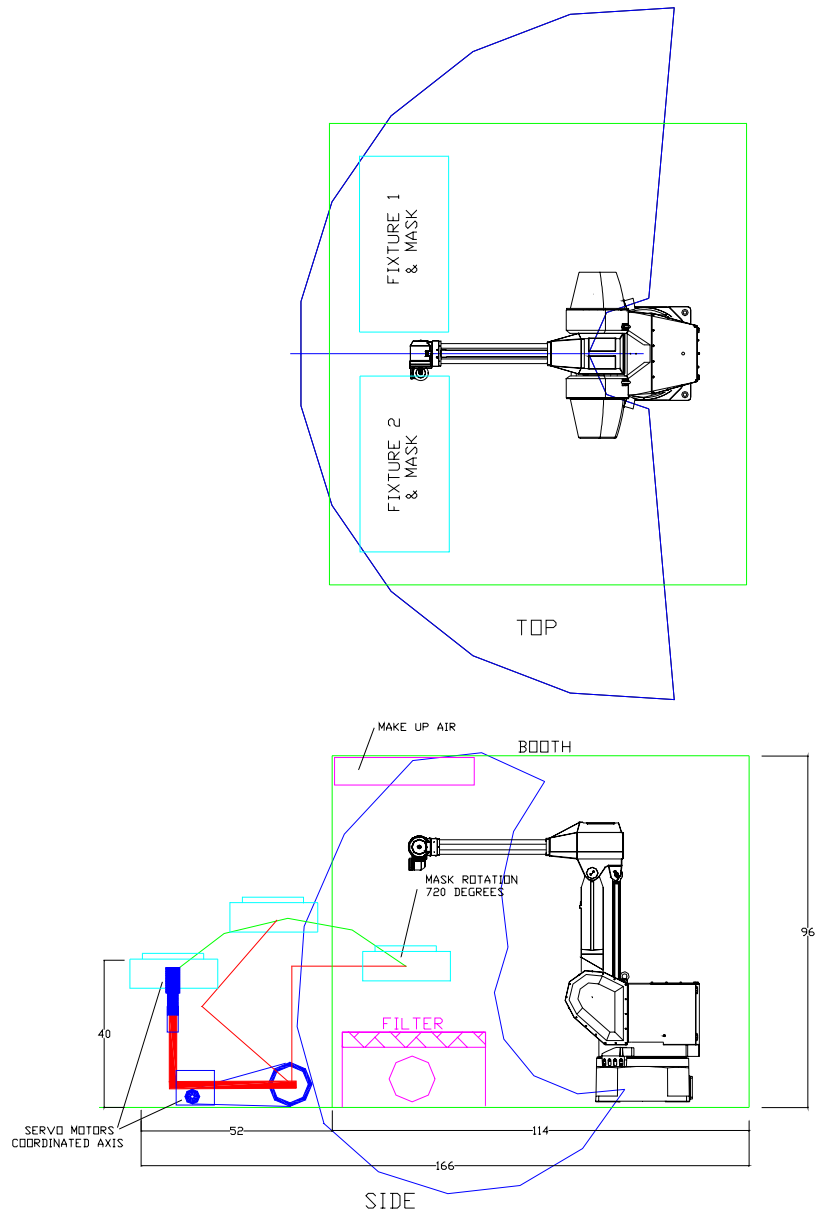
Single Cell Coating Systems



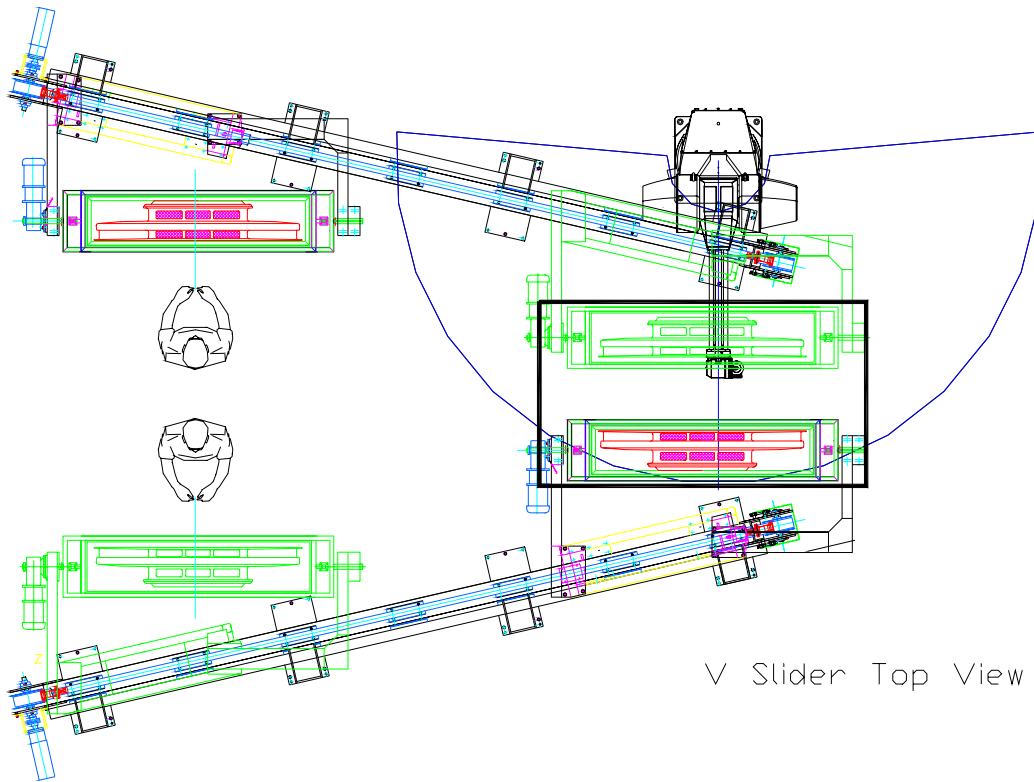
Single Cell Coating Systems



Single Cell Coating Systems



Single Cell Coating Systems



V Slider Top View